

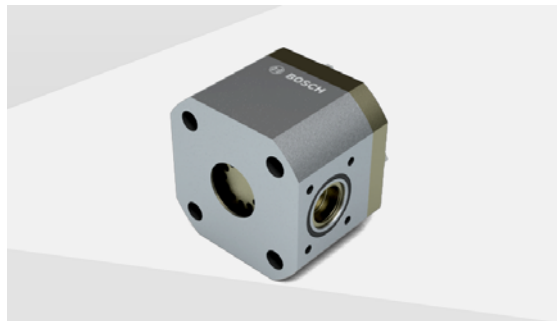


BOSCH
Invented for life

Gas admission valve for large engines

For the use of gas and dual-fuel engines

High-precision gas metering for each cylinder



flexible valve sizes

for different flow rates

up to
24,000 h

of reliable operation at a speed
of 1,000 rpm

- ▶ In developing the new gas admission valve (LEGV), Bosch has added gas fuel to its fuel injection options and extended its product portfolio for large engines.
- ▶ The LEGV meters gas into the intake manifold on the engine with extreme precision and ensures that the air and gas are mixed extremely well.
- ▶ The high homogeneity of the gas/air mixture is decisive for optimal combustion. Selecting the right valve size and flow rate are crucial in achieving a high degree of homogeneity.
- ▶ Gas admission valve LEGV 400 has a geometric cross-section of 400 mm² and generates up to 500 kW of power per cylinder.